



Clariss Platform

Clariss checklist for IT pros

The Clariss platform is an extensible, low-code environment for custom app development and workflow automation used by 1+ million professionals around the world. By adding Clariss to your technology stack you can dramatically reduce your IT project backlog without sacrificing quality, security, or control.

The flexibility of the Clariss platform continually aligns with IT governance principles to manage risk and optimize performance.

Use Clariss, a complete rapid application development tool, to quickly create and deploy apps and workflows that are secure, compliant, and performant for your team.

- **Security:** Use robust industry-standard security features to protect your data.
- **Integration:** Easily integrate Clariss with existing systems and automate repetitive tasks.
- **Administration:** Maintain and monitor your system with intuitive, time-saving tools.
- **Deployment:** Deploy apps in any environment and on any platform; scale to 500 users.

"By reinventing our processes with the Clariss platform, we have improved safety, increased efficiency, delivered a better quality product, increased productivity and reduced costs – not to mention boosting customer satisfaction."

– Jeff Coghlin, IT manager, Braun Electric Company

See how Clariss platform aligns with your IT requirements.

✓ SECURITY and PRIVACY

Security, compliance, and governance are our top priorities. We adhere to Apple's rigorous policies and procedures in place to ensure your data is safe and remains private.

SOC 2: Audited SOC 2® Type 2 report for security, availability, and confidentiality of [Clariss cloud services](#).

ISO certifications: [ISO certifications](#) for information security management (ISO/IEC 27001) and personal data in the cloud (ISO/IEC 27018).

Encryption:

- AES-256: Encrypt data at rest and database passwords with AES-256 encryption.
- SSL/TLS 1.2: Encrypt data in transit using SSL or TLS 1.2 and above.
- AWS key management: Cloud services use AWS key management for encrypted passwords.

Authentication: Authenticate via Active Directory, Open Directory, or OAuth 2.0 identity providers. Supports multi-factor authentication (MFA) and passwordless authentication.

Role-based access: Separate roles and privileges for IT, administrators, and developers.

User access: User access management and external identity provider support.

Privacy: Customer data is treated in accordance with the [Clariss Privacy Policy](#).

GDPR: Clariss complies with GDPR, however customers are responsible for compliance within their respective apps. Learn more about [GDPR](#).

LEARN MORE:

- [Security features >](#)
- [FileMaker Security Guide >](#)
- [Security for IT Professionals >](#)
- [Clariss Cloud Services Security >](#)

✓ INTEGRATION and AUTOMATION

Connect with your existing systems and data stores with Claris. You'll never have to say "No" to a new project — use the development skills you already have to extend your app.

Automated workflows: Integrate your apps together and create automated workflows with Claris Connect.

Advanced workflow tools: Use conditional if-then statements, loops, auto-replay, and variables for advanced workflow automations with Claris Connect.

Standard coding tools: Extend Claris with JavaScript, REST APIs, JSON, cURL, and other familiar development tools.

SQL: Create two-way SQL connections with Microsoft SQL Server, MySQL, and Oracle data.

FileMaker Data API: Use the FileMaker Data API, a REST API, to integrate FileMaker data into your web services.

OData: Allow OData-capable client applications to query and update Claris data.

Easy import: Import existing data including CSV, XML, and Microsoft Excel files.

Prebuilt code: Use prebuilt add-ons and plug-ins or create your own for additional functionality.

Custom code: Leverage predefined scripts and calculations to quickly put together custom code.

LEARN MORE:

- [Claris Connect Help >](#)
- [Integration features >](#)
- [FileMaker Data API Guide >](#)
- [OData Guide >](#)
- [Automating tasks with scripts >](#)

✓ ADMINISTRATION and MONITORING

Get 24/7 availability and reliability, remotely manage apps with ease, and save time by automating administrative tasks.

Automated admin tasks: Intuitive Admin Console provides tools to manage, monitor, and maintain your system.

FileMaker Admin API and CLI: Use the Admin API or the command line interface to help manage the server by utilizing your own custom tools or third-party tools and web services.

Data migration: Use the data migration tool to save time when importing large data sets.

Server-side scripts: Run server-side scripts to automate database and system tasks.

24/7 monitoring: Expert teams monitor cloud services 24/7 for peak performance and threat protection.

Zabbix support: Monitor on-premise server resources and metrics with Zabbix, an open-source tool.

Audit trails: For cloud services, create audit trails with operating system, app, and user activity log files.

Backups: Schedule automated backups that can be easily preserved and restored. Back up only data that has changed with progressive backups.

LEARN MORE:

- [Claris FileMaker Server Installation Guide >](#)
- [Claris FileMaker Cloud Getting Started Guide >](#)
- [Claris Customer Console Help >](#)
- [FileMaker Admin API Guide >](#)

✓ DEPLOYMENT and SCALABILITY

Choose from flexible deployment options. Users on different environments and operating systems can all access the same apps and share data in real time.

Mixed environments: Deploy in any environment – cloud, on-premise, hybrid, mobile, or even offline.

Multi-platform: Share information with others on different platforms – Windows, macOS, Ubuntu Linux, iOS, iPadOS, and web.

Instant propagation: Changes made to the data or database schema are immediately available to all users on all devices.

Web browsers: Deploy apps automatically on web browsers, including Chrome, and Safari (for desktop and mobile) and Microsoft Edge.

iOS: Rapidly build mobile apps for iOS and deploy using mobile device management (MDM) in just hours or days.

Test environment: Deploy apps in both staging and live environments.

Docker support: Run on-premise FileMaker Server within a Docker container for faster testing and deployment.
[Learn more >](#)

Scalability: Tested to support up to 500 simultaneous clients when hosted on premise.

LEARN MORE:

- [Enterprise deployment guide >](#)
- [Deployment options guide >](#)
- [Web and mobile features >](#)
- [Claris FileMaker WebDirect Guide >](#)

✓ RESOURCE and TRAINING

Get the information you need to build, deploy, and maintain your Claris environment.

Claris FileMaker technical specifications

Review compatibility, interoperability, capacities, and more.

[Learn more >](#)

Product documentation

Download detailed guides and best practices to build, install, and deploy custom apps. [Learn more >](#)

Knowledge base

Access a repository of information on product features, security updates, and other technical information.

[Learn more >](#)

Claris Engineering blog

Get in-depth technical information on developing and managing your Claris deployment. [View >](#)

Claris Support

Get 1-to-1 email assistance for pre-purchase questions, orders, installation, conversion, and connectivity.

customer_support@claris.com

Claris Events

Attend online training, webinars and on-demand sessions.

[Learn more >](#)

Claris training

Learn how to build FileMaker apps with free resources tailored to your skill level. [Learn more >](#)

Claris Partners

Use vetted partners to either build or help you build your custom apps. [Learn more >](#)

Claris Marketplace

Explore apps, add-ons, tools, training and more created by Claris experts. [Learn more >](#)

Claris Community

Ask questions and get input from other Claris developers.

[Learn more >](#)

Claris Certification

Validate your Claris FileMaker expertise with an official credential. [Learn more >](#)

Why choose Claris?

Trust a proven platform that will be there for you – now and in the future. As an Apple company, Claris has been delivering continuous innovation – for more than 35 years – that organizations rely on for their day-to-day operations.

■ **More than 1 million active users** around the world.

■ **Global operations** in United States, London, Tokyo, Beijing, and Sydney.

■ **Platform available** in 11 languages.

■ **Vibrant user community** that offers tips and best practices.

■ **Over 1,500 partners worldwide** available for consultation.

■ **Used by 50,000+ companies**, including many of the Fortune 500.



Contact us

North America: 800-725-2747 | United Kingdom: +44 208 268 6030 | Australia: +61 28 987 8300

All Worldwide Sales & Support offices: <https://www.claris.com/company/contact/>

Email: customer_support@claris.com | Email: claris_sales@claris.com

How it works.

Here's how the components of the Claris platform work together.

CREATE:

Build apps on your Windows or Mac computer. These custom apps can be created for your computer, mobile device, or the web.

Claris platform

CREATE



Windows and Mac desktop

Claris FileMaker Pro

HOST

Cloud
Linux

Claris FileMaker Cloud



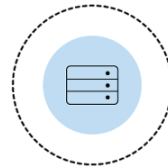
Cloud

Claris Partner

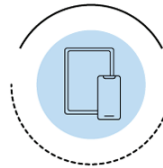


On premise
Windows, Mac, and Linux

Claris FileMaker Server

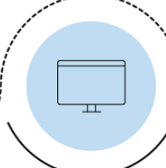


ACCESS



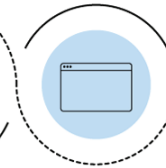
iPhone and iPad

Claris
FileMaker Go



Desktop

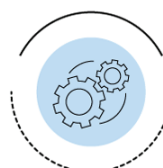
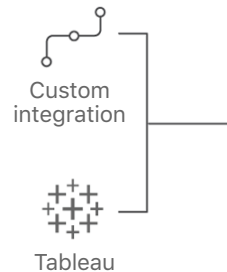
Claris
FileMaker Pro



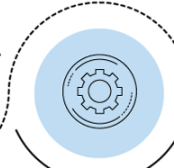
Browser

Claris
FileMaker
WebDirect

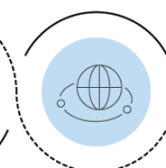
INTEGRATE



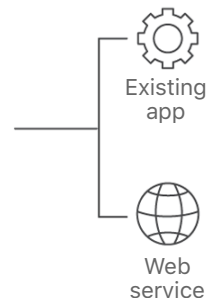
REST API
FileMaker
Data API



Workflow automation
Claris
Connect



REST API
OData



Mailchimp



More apps



Slack

ACCESS:

Users can easily access FileMaker apps from a computer, tablet, mobile and the web.

INTEGRATE:

The Claris Platform seamlessly integrates with other data sources, applications and technologies, giving you even more ways to extend your custom app.